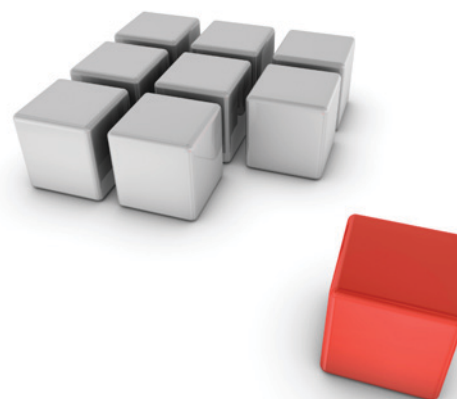


## Virtual Scale-out Storage Grid - Technology that works for you

The best technology is one you never see. Gridstore's Scale-out Storage platform is virtualized from the ground up to eliminate the complexity of monolithic storage systems to give you the flexibility, performance, scalability and reliability beyond enterprise systems at a fraction of the cost.

Reliability, scale, performance and cost drive buying decisions – but eliminating complexity drives ease of use and flexibility. Gridstore offers both through advanced capabilities such as seamless and instant capacity expansion and automatic self-healing from faults that simply require the addition of a new storage node to your network.

No complex RAID strategies, controller configurations or backplane networks with lists of certified switches. Just advanced technology that works so you don't have to.



### Key Platform Features

#### Management Simplicity -- Microsoft MMC Snap-in

Designed for the Network Administrator, Gridstore is integrated into the familiar Microsoft Management Console to eliminate the need for a separate console and streamline your productivity.

#### RAIDg - Protection Beyond Enterprise RAID

Gridstore Scale-out NAS requires no complex RAID controller configuration. RAIDg simplifies the protection of your critical business data. When you create a volume, you simply dial in the number of faults you want that volume to be able to handle without disruption or data loss. This ensures your storage system can run nonstop even if multiple nodes failed simultaneously.

#### Thin Provisioned Volumes

Gridstore volumes are thin provisioned so you can “reserve” capacity for particular uses – without having to add that capacity upfront. And when it is needed, you can simply add blocks of storage to your pool to meet the capacity demands. The result is better capacity utilization and dollars saved up front.

#### Active Directory Support

Gridstore integrates seamlessly with your existing AD users, groups and structures to ensure there is no duplicated work or information that needs to be synced. AD resources are granted access to volumes you create on your Gridstore which are then actively enforced through your domain controllers / Windows security. Access control continues to be managed in one place to make your job easier.

#### One Click Distribution

Gridstore's seamless integration with Microsoft Active Directory and the MMC provides fine grained access control and automated software distribution via group policies to deploy virtual controllers to any machine, user, group or organization with a single click.

**Simple Storage Building Blocks**

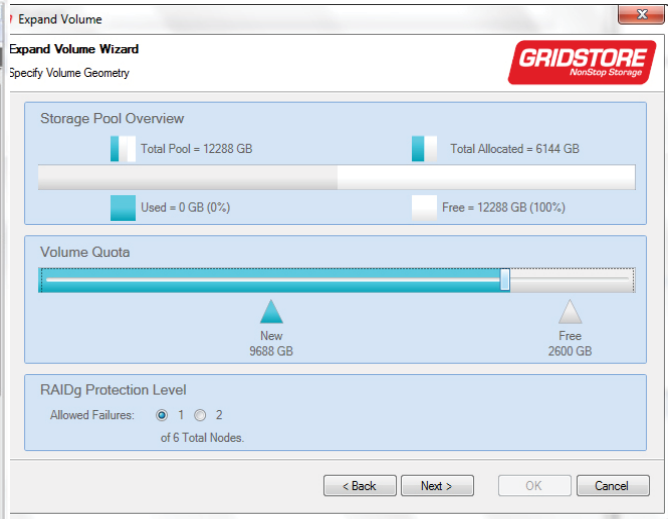
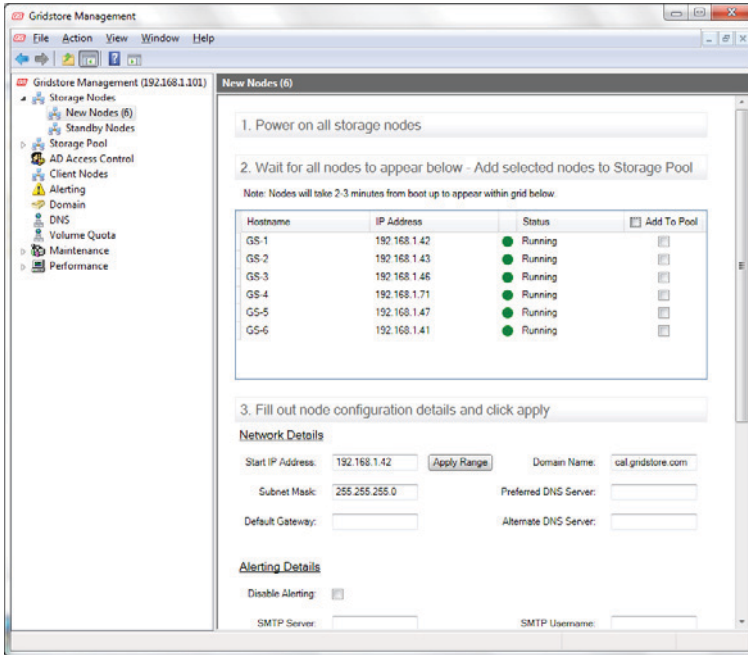
**Unlimited Incremental Capacity**

**Performance without Limits**

**Reliability beyond RAID**

**Streamline admin with MMC snapin**

**Instantly grow capacity to any size ...**



**... just add as required.**



**GS-1000 Storage Node Specification**

<b>Operating System</b>	Microsoft® Windows Embedded Standard 7
<b>Processors</b>	Intel® Atom™ (2 x 1.8 GHz core)
<b>Memory</b>	1GB DDR3 RAM
<b>Network</b>	1Gb/s Ethernet NIC
<b>Drive Options</b>	1TB / 2TB SATA II HDD (300 Gb/s)
<b>Dimensions / Weight</b>	1U x 19" x 9.84" / 15 lbs.
<b>Power Requirements</b>	25w per node
<b>Factory Warranty and Support</b>	Software: 90 days; Hardware: 1-year Return to Factory (RTF); Extended : 3-year software/hardware optional